



EUROPEAN FOREST INSTITUTE
MEDITERRANEAN REGIONAL OFFICE - EFIMED

EFIMED- The Mediterranean Regional Office of EFI

Elena Górriz

EFIMED Communication & Capacity building Officer
CTFC – Researcher in Forest Economics



www.efimed.efi.int



Background for EFIMED

- The **uniqueness** of Mediterranean forests
- The **scientific challenges** related to their conservation and sustainable management
- The **fragmentation** of the forest research community and lack of resources/capacities
- **International cooperation** and **Networking** can respond efficiently to challenges of international relevance



Science based information for sound Management and policy making

Networking	Research	Capacity building	Information	Policy advice Advocacy

EFIMED



Strategic research topics

Networking

Research

**Capacity
building**

Information

Advocacy

Impact of climate and land-use changes on forest ecosystems functioning and related key resources: water and soil

Integration of the risk of forest fires in land use and forest management planning

Economic tools and policies for sustainable forest goods and services

Models and decision systems for optimising forest management planning





Type of activities ?

A collective scientific assessment on wildfires (editor: Y. Birot); to improve the science policy interface

International Summer school in Turkey

Course for policy makers in Spain

MASSIF project



EFI Discussion Paper 15, 2009

Living with Wildfires: What Science Can Tell Us

A Contribution to the Science-Policy Dialogue

Yves Birot (ed.)





Advocacy

Mediterranean Forest Research Agenda





A joint agenda based on 4 key challenges/priorities



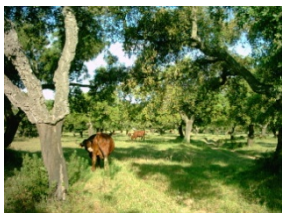
1. Impacts of climate and land-use changes in forests ecosystems functions



2. Integration of the risk of forest fires in forest management planning



3. Economic tools and policies for sustainable forest goods and services



4. Models and decision systems for optimising forest management planning



Networking

(outside Mediterranean area)

● Finland





Capacity building

- **EFIMED PhD Award** > deadline October 31st
- **Grant to research projects in Model Forests** > deadline 30th November
- AGORA project
- Summer – winter schools



Information and dissemination

- Newsletter > articles, news, events, requests of interest... welcome!
- Scientific seminars > II Mediterranean Forest Week

BACKGROUND

Mediterranean forests require special attention because:

- They play a key role in the welfare of urban and rural Mediterranean societies, by providing highly appreciated marketed goods (e.g. firewood, cork, pine kernels and mushrooms) as well as high-value but non-market services (e.g. landscape quality, soil protection, water regulation and recreation possibilities);
- They constitute an unique world natural heritage in terms of biological diversity; however, this patrimony is seriously endangered;
- Their conservation and management affects the availability of soil and water resources - key strategic resources for Mediterranean societies;
- Their future is seriously endangered by rapid and drastic climate and land-use changes, which add to long-lasting problems related to forest fires, forest over-exploitation and the advance of desertification.

EUROPEAN FOREST INSTITUTE
MEDITERRANEAN REGIONAL OFFICE - AVIGNON

Silva Mediterranea

INRA

II Mediterranean Forest Week
5-8th of April 2011
Avignon, France
Venue: Palais des Papes

www.efimed.efi.int

10

20.8.2004



PROGRAMME

Tuesday 5th		Wednesday 6th		Thursday 7th	Friday 8th				
9.00	Plenary Session	Scientific Seminar	Poster exhibition	Field trip "Mont Ventoux"	AGORA	Profitability and SYLVAMED	FAO EEC Silva Mediterranea	GOVERNANCE SESSIONS	
10.00									
11.00	Coffee break: Salle des Gardes / Paneterie / Chaire	Coffee break: Paneterie / Chaire							
11.30	Plenary Session	Scientific Seminar	Poster exhibition		Coffee break: Paneterie / Chaire				
12.00					Plenary Session				
13.00	Joint lunch: Jeanne Laurent	Joint lunch: Jeanne Laurent			Free lunch				
13.30									
14.30	EFIMED Annual Meeting*	FAO EEC Silva Mediterranea	GOVERNANCE SESSION (MFM, ARCMED, MAFN, COFOR)	Scientific Seminar	Poster exhibition	AGORA	Profitability and SYLVAMED	FAO Silva Mediterranea WG-3	Field trip "Sabote-Rousse" Model Forest
16.00				Parallel 1	Parallel 2	Parallel 3			
16.30	Coffee break: Salle des Gardes / Paneterie / Chaire	Coffee break: Paneterie / Chaire							
17.00	EFIMED Advisory Group	ARCMEU General Assembly	Scientific Seminar	Poster exhibition					
18.00			Prize Conference						
19.00									
20.30			Official Dinner: Silva Mediterranea 100th Anniversary						

Rooms Coffee Break XI Paneterie

EFIMED SCIENTIFIC SEMINAR

The focus of the EFIMED scientific seminar of the II Mediterranean Forest Week will be on Biodiversity of Mediterranean Forest Ecosystems: changing the paradigm of conservation. The seminar will consist of three sessions:

- Session 1: Biodiversity and ecosystem functioning; do "biodiverse" ecosystems have a comparative advantage?
- Session 2: How plant communities move?
- Session 3: Valuing and financing biodiversity in forest ecosystems

POSTERS

The Scientific Seminar has a closed programme of oral presentations. Researchers interested in participating via presenting a poster are encouraged to submit an abstract to EFIMED Secretariat. Selected authors will be informed in due time. The language of the abstract and poster may be English or French. The layout of the abstract may be downloaded from the webpage of the event.

OTHER MEETINGS

- Water and forests interactions (Tue. 5th)
- EFIMED Annual Meeting (Tue. 5th)
- ARCMEU General Assembly (Tue. 5th)
- Forest governance in the Mediterranean region (Mon. 5th)
- Silva Mediterranea FAO EEC. Anniversary of 100 years of Mediterranean cooperation on forest issues (Tue. 5th and Fri. 8th)
- EFIMED Seminar: 'Biodiversity of Mediterranean Forest Ecosystems: changing the paradigm of conservation' (Wed. 6th)
- The profitability (social and private) of Mediterranean forests (Fri. 8th)
- Capitalizing on the past and existing Mediterranean forestry projects (Tue. 5th and Fri. 8th)
- AGORA project (Fri. 8th)
- SYLVAMED project (Fri. 8th)

FIELD TRIP TO THE VENTOUX MOUNTAIN

The field trip complements the seminar, forms an integral part of the Mediterranean Forest Week and is designed to enhance interactions between decision makers, managers, and scientists. The field trip is built around three topics:

- The Ventoux Mountain (el. 1910 m.a.s.l.); 150 years of a success story: from bare slopes to continuous forest cover, from a desertified area to a biosphere reserve.
- Modelling the dynamics of heterogeneous forests as background to management.
- Forest health and vitality: dieback related to climate change.

IMPORTANT DEADLINES

- Poster abstract submission: 15/11/2010
- Acceptance of abstracts: 01/12/2010
- Early registration: 15/12/2010
- Standard registration: 15/03/2011
- Final programme: 15/03/2011

REGISTRATION FEES

Deadlines	Early fee 1.10.2010- 15.12.2010	Standard fee 16.12.2010- 15.03.2011
Regular rate (full week)	150,00€	300,00€
Reduced rate* (full week)	100,00€	200,00€
Regular rate (single days)	70,00€	100,00€
Reduced rate* (single days)	50,00€	80,00€

(* participants coming from the following countries: Albania, Algeria, Bosnia-Herzegovina, Croatia, Egypt, FYROM, Jordan, Kosovo, Lebanon, Libya, Montenegro, Morocco, Palestinian territories, Serbia, Syria, Tunisia and Turkey.

LANGUAGE

The official languages of the event are English and French. Simultaneous translation will be available during the plenary sessions.

TARGET AUDIENCE

Decision makers, managers, experts, scientists and different stakeholders from different Mediterranean countries will participate in the workshop:

- International organizations, EU institutions, Governments, local communities;
- Forest Services, forest owners and related associations;
- Environmental and other NGOs;
- Research organizations and Universities dealing with forestry and environmental issues.

SECRETARIAT

Mercedes Rois, EFIMED (Mercedes.rois@efi.int)



Thank you very much!





Tomorrow...

7:30 h – Economics & Genetics

7:00 h – Management

FEEDBACK FORM!!!